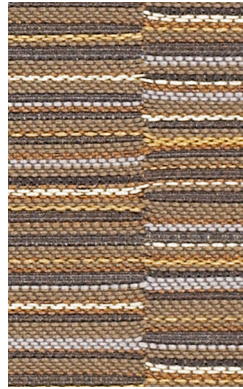


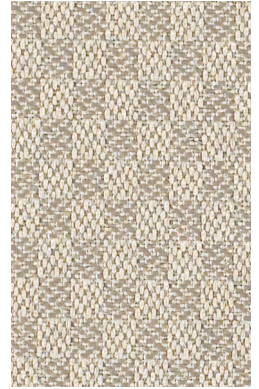
COVER CLOTH PLATINUM



CANTER QUARRY



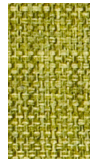
LINEUP SANDSTONE



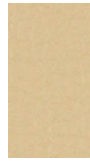
INSIGHT FOSSIL



OAT



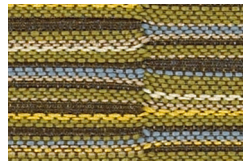
SORREL



SAND



SADDLE



FERN



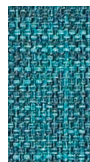
SHALE



BLOND



HEIRLOOM



CYAN



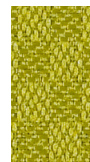
SAFARI



EARTH



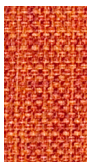
TRANQUIL



WASABI



REAL RED



ZEST



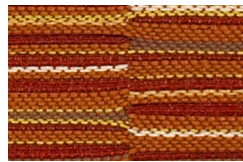
VESSEL



CHESTNUT



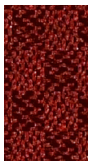
BALTIC



SPICE



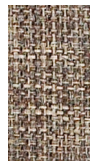
PERIWINKLE



PORT



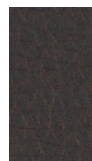
VESPER



TAUPE



ALFALFA



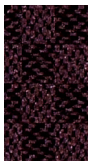
NIGHT



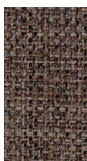
BALTIC



MIDNIGHT



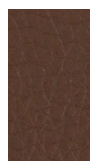
EGGPLANT



HICKORY



GRAPHITE



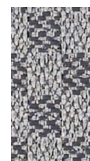
MICA



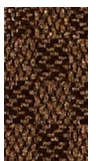
IRON



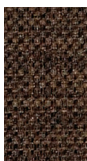
PEWTER



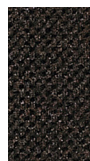
SUMMIT



BARK



COFFEE



JET



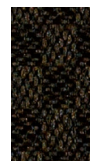
SABLE



ONYX



SHADOW



PEPPER



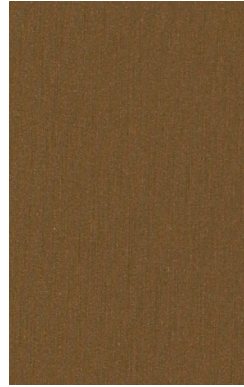
EBONY



ORIGIN SYSTEM



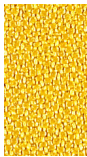
FUSE MALTED



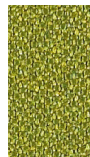
ICON PATINA



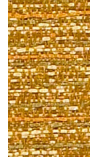
PERK SESAME



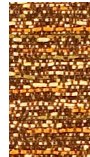
EUREKA



GAIA



SAFFRON



MOREL



FILAMENT



DIJON



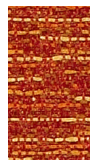
SESAME



MIKAN



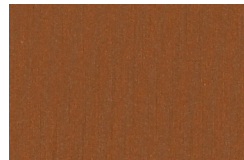
ARUNDEL



PIMENTO



PRISTINE



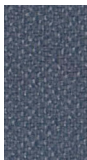
LACQUER



CEDAR



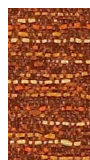
CABANA



SODALITE



SAPPHIRE



GINGER



CRESS



LIDO



AUBURN



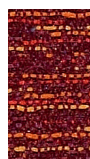
PEWTER



MANTA



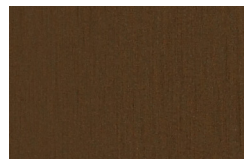
INDIGO



CARMINE



AZUREAN



ANTIQUED



CRIMSON



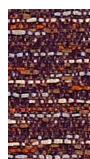
PATRIOT



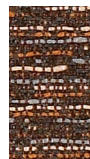
BASALT



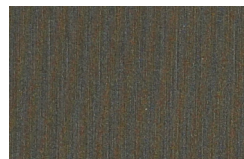
STEEL



IRIS



WALNUT



SHADOW



REGAL



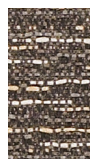
FLINT



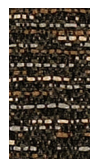
IRON



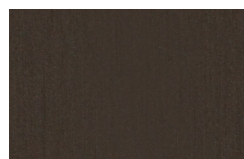
JET



LUNAR



PEPPER



SCENE



WALNUT



EBONY

TECHNICAL INFORMATION

Width - Pattern	Fiber Content & Backing	Finish	Abrasion (D.R.)	Light-fastness	Approx. Repeats	Cl. Code
54" CANTER ☼ A ☼ ☼ ☆ *	100% Polyurethane / PVC Free Polyester Knit Backing	Anti-microbial, Anti-bacterial	240,000	200 Hrs. Class 4.5		W BC (4:1)
59" COVER CLOTH ☼ A ☼ ☼ ☆ *	56% Repreve® Post Consumer Recycled Polyester, 44% Polyester	Crypton® Green	200,000	40 Hrs. Class 4		W BC (10:1)
54" FUSE ☼ A ☼ ☼ ☆ *	65% Post Industrial Recycled Polyester, 35% Post Consumer Recycled Polyester Latex Backing	Soil and Stain Resistant	100,000	40 Hrs. Class 4.5		WS
54" ICON ☼ A ☼ ☼ ☆ *	100% Polyurethane / PVC Free Polyester Knit Backing	Anti-microbial, Anti-bacterial	435,000	200 Hrs. Class 4.5		W BC (10:1)
54" INSIGHT ☼ A ☼ ☼ ☆ *	100% Post Consumer Recycled Polyester Acrylic Backing	Soil and Stain Resistant	192,000	40 Hrs. Class 5	¼" L, ½" W	WS
56" LINEUP ☼ A ☼ ☼ ☆ *	100% Post Consumer Recycled Polyester Acrylic Backing	Soil and Stain Resistant	100,000	40 Hrs. Class 5	1 ¾" L, 3 ¾" W	WS
58" ORIGIN ☼ A ☼ ☼ ☆ *	100% Post Consumer Recycled Polyester Acrylic Backing	Soil and Stain Resistant	282,000	40 Hrs. Class 4		WS
54" PERK ☼ A ☼ ☼ ☆ *	50% Post Consumer Recycled Polyester, 50% Polyester Acrylic Backing	Soil and Stain Resistant	102,000	40 Hrs. Class 5	¼" L, ¼" W	WS

*ACT® Registered Certification Marks

All Patterns in this Collection-

Meet California Bulletin 117 2013

Primary Application: Upholstery Seating

Cleaning Code Definitions-

W: Water-based foam or cleaner.

WS: Water-based cleaning agents or foam.

BC: Bleach Cleanable

For memo samples contact:

MOMENTUM
T E X T I L E S

800-366-6839
memosamples.com

DPC
DANIEL PAUL
C H A I R S®

2052 South Economy Road Morristown, TN 37813
Tel 423.586.9977 Fax 423.586.9927
Sales@DPCchairs.com www.DPCchairs.com