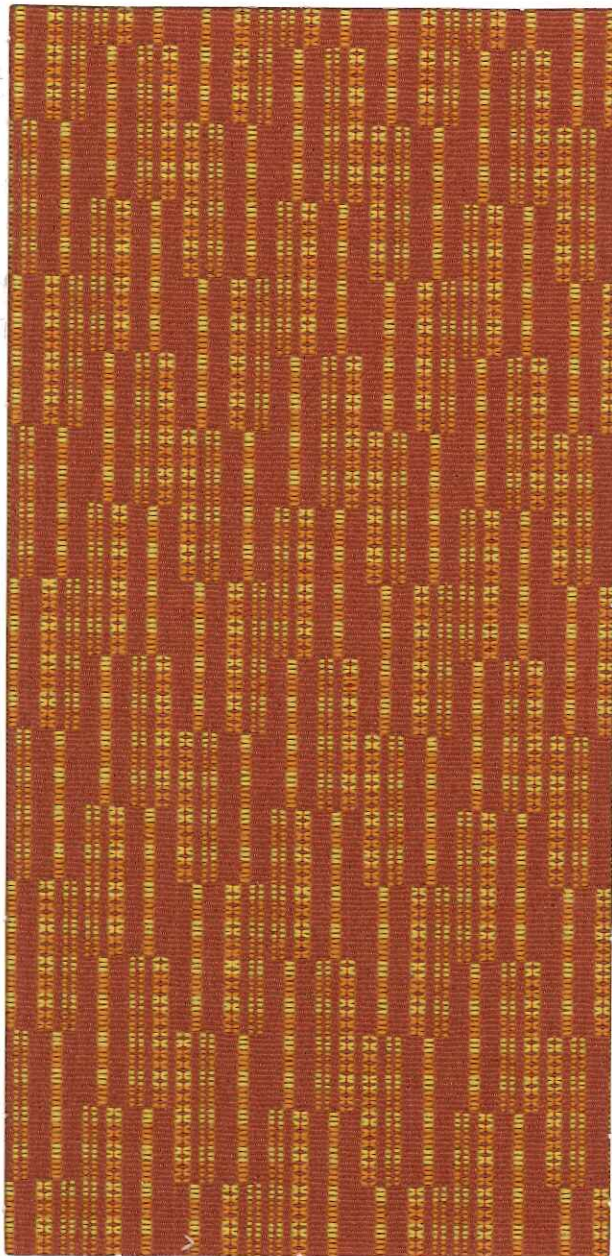
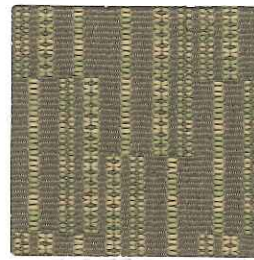


Corinthian



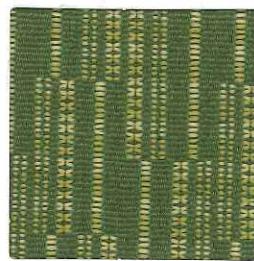
Marigold



Taupe



Jonquil



Lawn



Marigold



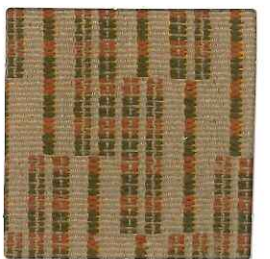
Blue Lake



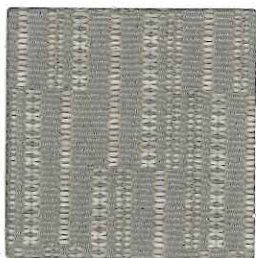
Pomodoro



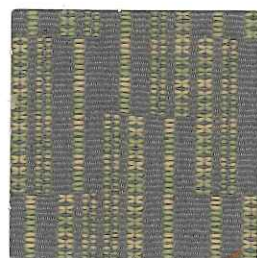
Blueberry



Pebble



Pearl



Feather Gray



Charcoal



Cognac

Corinthian

Content:	100% Polyester
Backing:	Synthetic latex blend
Weight:	13.3 oz. per linear yard
Width:	54"
Abrasion:	Heavy Duty - Exceeds 60,000 Cycles (Wyzenbeek - #10 Cotton Duck Abradant) (ASTM D4157)
Light Fastness:	Class 4/40 hrs. min. (AATCC16A)
Color Fastness:	Class 3 (ASTM D3597, AATCC 8) Wet Class 4 (ASTM D3597, AATCC 8) Dry
Physical Properties:	Class 4 (ASTM D3511) Brush Pill 97 lbs. warp, 89 lbs. weft (ASTM D5034) Breaking Strength 79 lbs. warp, 49 lbs. weft (ASTM D4034) Seam Slippage
Passes:	California Tech. Bulletin #117-2013 UFAC Class I NFPA 260 Class I
Cleanability:	W - Water based cleaners may be used.

This fabric is made in China.

CULP
CONTRACT

For samples or further information, please contact:
Culp, Inc.
Contract Fabrics
1823 Eastchester Drive
High Point, NC 27265
Phone: (336)-889-5161
Fax: (336)-899-7848
www.culpcontract.com

4-13-2016