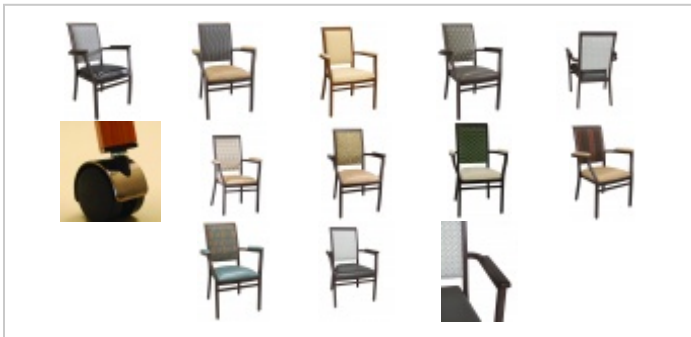




## 3051-WR Stacking Chair



### Overview

The NuGrain series features the look of real wood finishes on a strong, welded aluminum frame for heavy duty contract use designed for years of service. The heavy wall aluminum frame is finished with an engineered, heat transfer system that literally turns the frame surface into the look and feel of real wood without the worry of wood joints working loose over time. The NuGrain series is the perfect seating selection for senior living, club dining, and lobby areas in medical and public facilities. Molded foam seat cushions assure years of seating comfort and support. All foam cushioning meets the requirements of California Technical Bulletin 117.

### Features

Stack of 4 recommended, maximum of 6.

Plated rubber cushions steel-based glides.

Consult **NuGrain Finishes** for color selections.

Learn more about the NuGrain Process, durability and cleaning.

### Specs

Width: 25"

Depth: 24"

Back Height: 38"

Seat Height: 18.5"

Arm Height: 27"

C.O.M. Yardage: 1.5

### Product Options

Many premium options further enhance the ability of the NuGrain series to fulfill specific designer or user requirements:

-9 (2) Casters on front legs (only) of the armchairs to facilitate movement to and from a table for those with impaired ability.

(Casters on the front legs only prevent “freewheeling” when being seated that could lead to falls or injury.)

The Caster Hood is made of metal that is plated Architectural Bronze.

Magic Slider? glides to make movement on certain surfaces even easier. (Teflon Glide Caps)

-NH Nail head trim on the inside backs.

-WA Solid wood arms in place of the standard upholstered arms.

\* When ordering hand trucks for this series specify #15/305I.