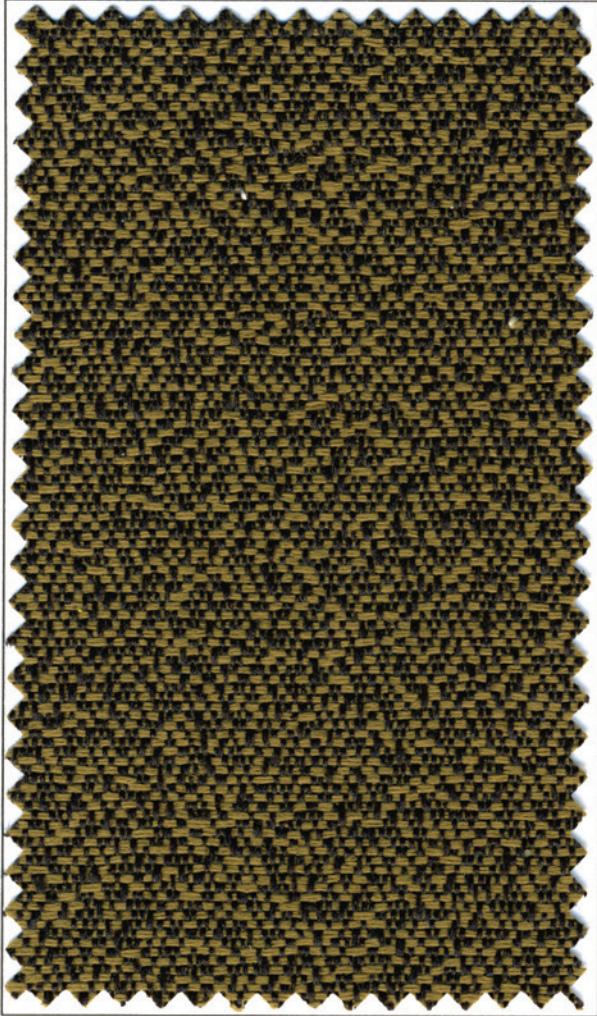
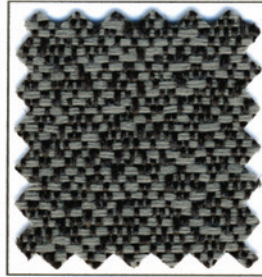


WIN WIN



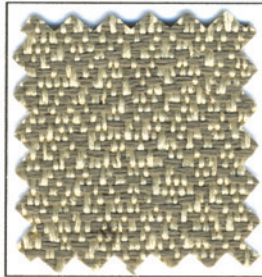
Brass



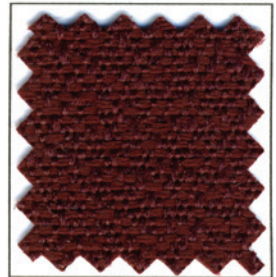
Gray



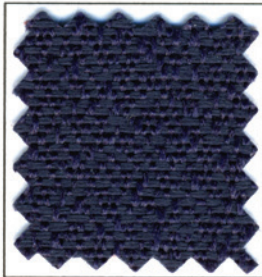
Black



Gravel



Burgundy

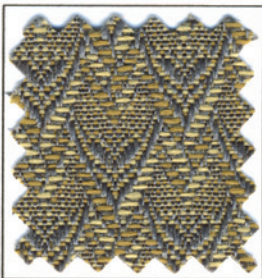


Admiral

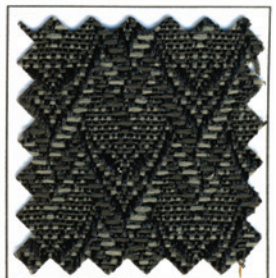
THUNDER STRIKE



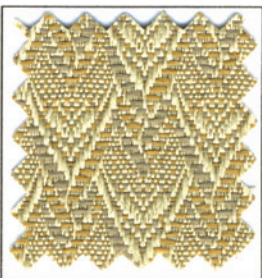
Camel



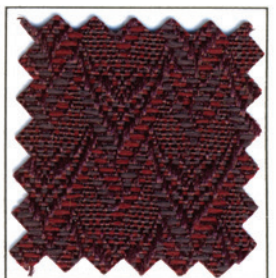
Bronze



Graphite



Birch



Cabernet

## Technical Information

	<b>Win Win</b>	<b>Thunder Strike</b>
Fiber Content:	Face: 100% Polyester	Face: 100% Polyester
Construction:	50 picks per inch / 45 ends per inch	44 picks per inch / 122 ends per inch
Width:	54"	54"
Weight:	Approx. .80 lbs. per linear yard	Approx. .60 lbs. per linear yard
*Colorfastness Code:	S	S
Seam Breaking Strength:	Warp - 95 lbs.	Warp - 94 lbs.
ASTM D-4034	Filling - 67 lbs.	Filling - 110 lbs.
Tear Strength:	Warp - 78 lbs.	Warp - 22 lbs.
ASTM D-2262	Filling - 35 lbs.	Filling - 21 lbs.
Tensile Strength:	Warp - 190 lbs.	Warp - 170 lbs.
ASTM D-5034	Filling - 190 lbs.	Filling - 160 lbs.
Seam Slippage:	Warp - 31 lbs.	Warp - 88 lbs.
ASTM D-4034	Filling - 28 lbs.	Filling - 94 lbs.
Abrasion:	Heavy Duty 50,000	Heavy Duty 80,000
ASTM D-4157	(Wyzenbeck Wire Screen)	(Cotton Duck)
Pilling:	Class 4	Class 4
ASTM D-3511		
Colorfastness to Light:		
ASTM D-3597	40 Hours, Class 4	40 Hours, Class 4
AATCC-16A		
Colorfastness to Crocking:		
ASTM D-3597	Dry - Class 4	Dry - Class 4
AATCC-8	Wet - Class 3	Wet - Class 3
Flammability:	California Technical	California Technical
	Bulletin 117, Section E	Bulletin 117, Section E
	CS 191-53: Did not ignite	CS 191-53: Did not ignite
	UFAC Class 1	UFAC Class 1

\*Spot clean only with water-free dry cleaning solvent. Pretest a small, inconspicuous area before proceeding. Do not saturate. DO NOT USE WATER. Pile fabrics may require brushing with a non-metallic, stiff bristle brush to restore appearance. Cushion covers should not be removed and dry cleaned. To prevent overall soiling, frequent vacuuming or light brushing with a non-metallic, stiff bristle brush to remove dust and grime is recommended. When cleaning a spill, blot immediately to remove spilled material. Clean spots or stains from the outside to the middle of the affected area to prevent circling. Overall cleaning by a professional furniture cleaning service only is recommended.

### **DPC** Daniel Paul Chairs LLC

Manufacturing Facility and General Office  
 2052 S. Economy Road  
 Morristown, TN 37813  
 Phone: 423.586.9977 Fax: 423.586.9927  
 Web Site: danielpaulchairs.com  
 E-mail: sales@danielpaulchairs.com