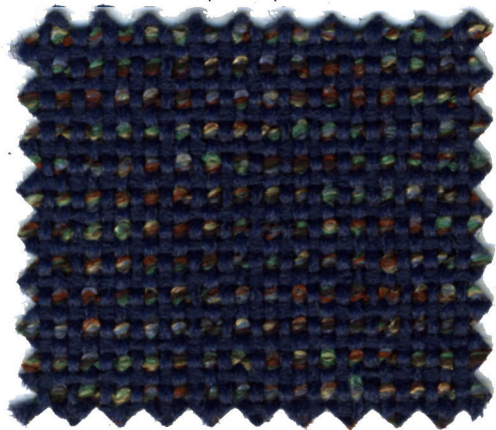


# DPC® Daniel Paul Chairs LLC

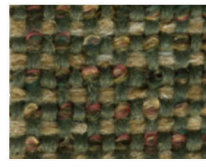
## Hewitt Warp Speed Colors



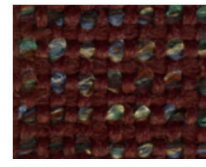
Hewitt Midnight



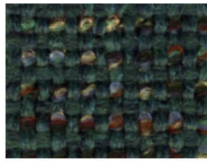
Hewitt Sepia



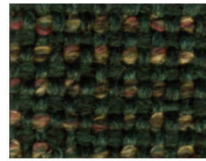
Hewitt Hazel



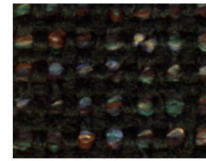
Hewitt Ming Red



Hewitt Fir Green



Hewitt Garden



Hewitt Carbon Black

## Sherpa & Shire Warp Speed Colors



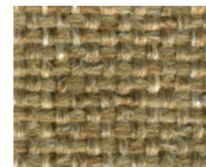
Sherpa Indigo



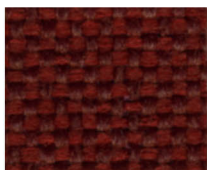
Sherpa Autumn



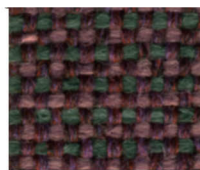
Sherpa Amber



Sherpa Brown Haze



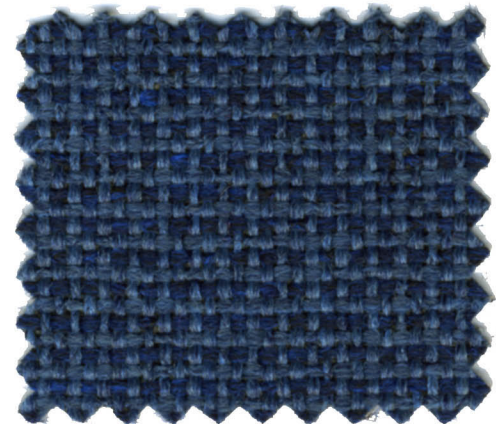
Shire Red Rose



Shire Veranda



Shire Patina



Shire Commodore



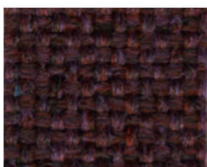
Sherpa Maroon



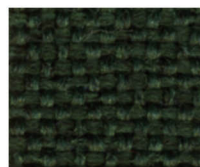
Sherpa Jade



Sherpa Moss



Sherpa Grape



Sherpa Billiard



Sherpa Grey Heather



Sherpa Academy Blue



Sherpa Dark Blue



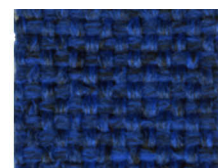
Sherpa Concord



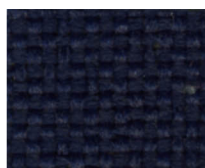
Sherpa Hunter



Shire Espresso



Sherpa Royal



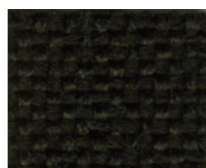
Sherpa Navy



Sherpa Purple Velvet



Sherpa Ivy League

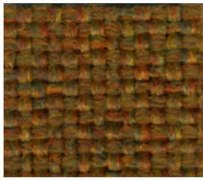


Sherpa Black

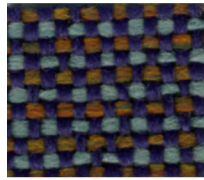
# DPC® Daniel Paul Chairs LLC

## Sherpa & Shire Feature Colors

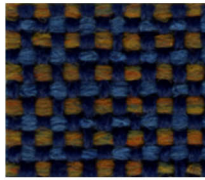
GRADE 8



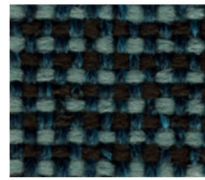
Sherpa Melon



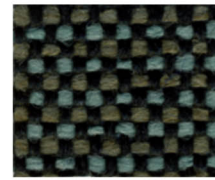
Shire Wildflower



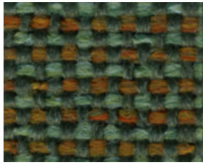
Shire Cordon Blue



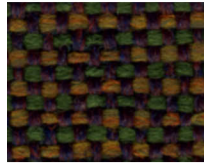
Shire Gulfstream



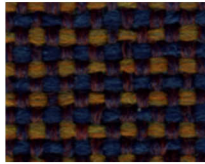
Shire Aqueduct



Shire Grassland



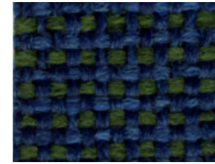
Shire Garden



Shire Aristocrat



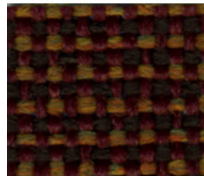
Sherpa Bayville



Shire Mariner



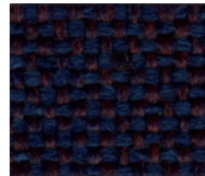
Shire Hopsack



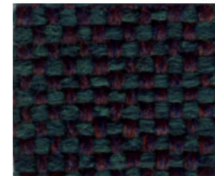
Shire Bricktown



Sherpa Newport

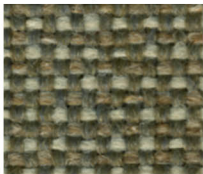


Shire Stanford Blue



Shire Rhapsody

## Sherpa & Shire Classic Colors



Shire Sesame



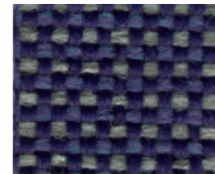
Sherpa Gargoyle



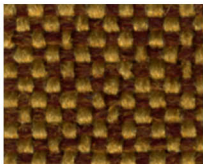
Shire Pine



Sherpa Teal



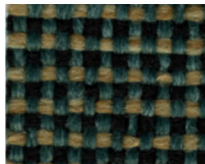
Shire Grey Lilac



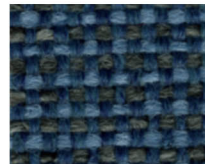
Shire Nectar



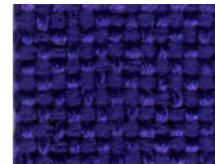
Shire Fossil



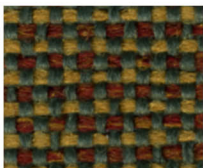
Shire Heath



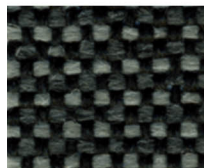
Shire Steel Blue



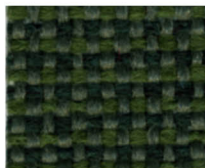
Sherpa Viola



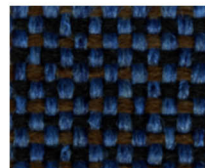
Shire Marigold



Shire Black Marble



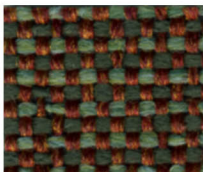
Shire Pesto



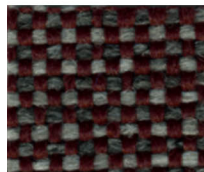
Shire Titan Blue



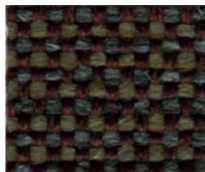
Shire Amethyst



Shire Tiger Lily



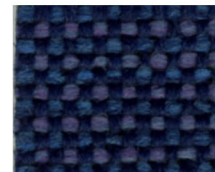
Shire Ascot



Shire Oxford



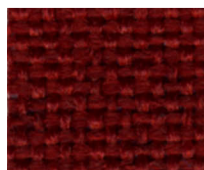
Shire Country



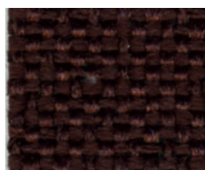
Shire Lobelia



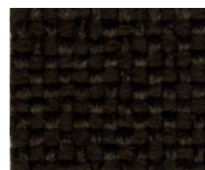
Sherpa Cardinal



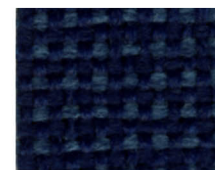
Sherpa Scarlet



Sherpa Rosewood



Sherpa Mahogany



Shire Ink

# DPC<sup>®</sup> Daniel Paul Chairs LLC

## Hewitt

**10 Year Warranty!** \*  
upholstery fabric

### Specifications


Fiber: 86% Marquésa<sup>®</sup> Lana,  
10% Acrylic, 4% Polyester  
Weight: 17.0 oz. per linear yard (± 1 oz.)  
Width: 54 inches  
Backing: Acrylic  
Repeat: None

Pattern Direction: Suitable for railroading 

Fabric Performance Symbols indicate that a fabric performs to commercial furniture manufacturing standards and passes all applicable testing as specified by the Association for Contract Textiles (ACT).

### Performance

▣ Abrasion (ASTM-D-4157): 80,000 Double Rubs  
★ Lightfastness (AATCC-16E): 60 Hours, Class 5  
● Colorfastness (AATCC-8): Wet - Class 5 Dry - Class 5  
☆ Seam Slippage (ASTM-4034): Warp - 50 lbs. Fill - 56 lbs.

☛ Flame Resistance: California Technical Bulletin 117, Section E  
CS-191-53, Class 1, BIFMA X5.7-1991  
NFPA 260-1989, Class 1, UFAC, Class 1  
B.S. 5852 Part 1: 1979 Ignition Source 0; Smouldering Cigarette 

Cleaning Code: WS - For water based stains, use water based cleaning agents.  
For oil based stains, use solvent cleaner.

## Sherpa + Shire

**Limited Lifetime Warranty!** \*  
upholstery fabric

### Specifications


Fiber: 100% Marquésa<sup>®</sup> Lana  
Weight: 16.0 oz. per linear yard (± 1 oz.)  
Width: 54 inches  
Backing: Acrylic  
Repeat: None

Pattern Direction: Suitable for railroading 

Fabric Performance Symbols indicate that a fabric performs to commercial furniture manufacturing standards and passes all applicable testing as specified by the Association for Contract Textiles (ACT).

### Performance

▣ Abrasion (ASTM-D-4157): 250,000 Double Rubs  
★ Lightfastness (AATCC-16E): 400 Hours, Class 4  
● Colorfastness (AATCC-8): Wet - Class 5 Dry - Class 4.5  
☆ Seam Slippage (ASTM-4034): Warp - 50 lbs. Fill - 54 lbs.

☛ Flame Resistance: California Technical Bulletin 117, Section E  
CS-191-53, Class 1, BIFMA X5.7-1991  
NFPA 260-1989, Class 1, UFAC, Class 1  
B.S. 5852 Part 1: 1979 Ignition Source 0; Smouldering Cigarette 

Cleaning Code: WS - For water based stains, use water based cleaning agents.  
For oil based stains, use solvent cleaner.

Sherpa & Shire are remarkably durable and cleanable upholstery fabrics. Constructed exclusively with Marquésa<sup>®</sup> Lana yarns, which gives them inherent strength, these fabrics have set an unsurpassed standard for performance and abrasion ratings and are nearly impervious to damage.

The intergration of fiber and finish utilized in creating Marquésa<sup>®</sup> Lana gives this fabric its extraordinary wearability and distinctive stain resistant properties. Color that goes all the way through to the fibers ensures that color 'won't wear off.' With proper maintenance, Sherpa & Shire fabrics will retain their new look for years with no fear of tears, yarn breaks, pilling or snagging under normal use.

## DPC<sup>™</sup> Daniel Paul Chairs LLC

### Manufacturing Facility and General Office

2052 S. Economy Road  
Morristown, TN 37813  
Phone: 423.586.9977 Fax.: 423.586.9927

Web Site: [danielpaulchairs.com](http://danielpaulchairs.com)

E-mail: [sales@danielpaulchairs.com](mailto:sales@danielpaulchairs.com)