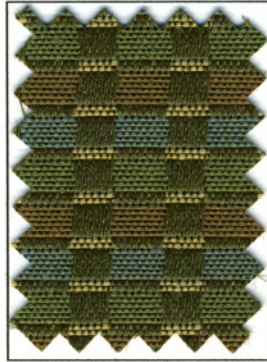


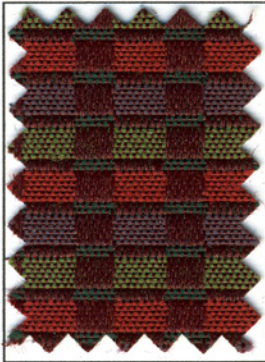
Silver Lake



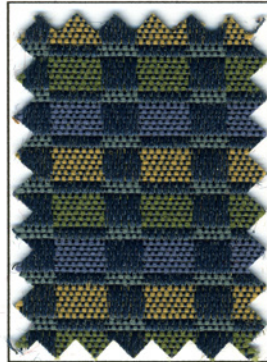
Basil



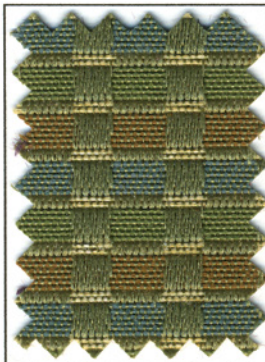
Passion



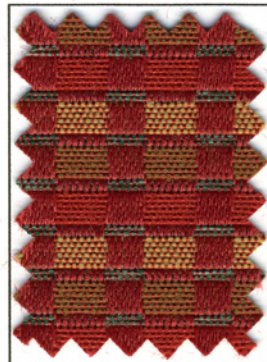
Prism



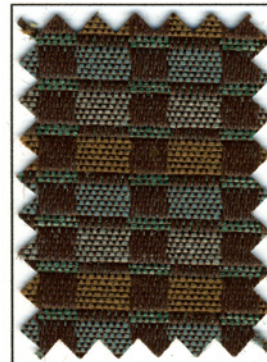
Bay Blue



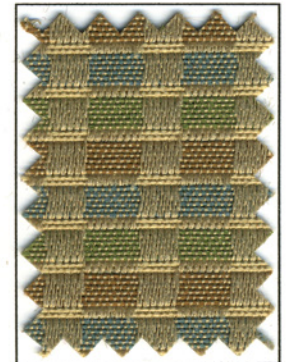
Avocado



Apple



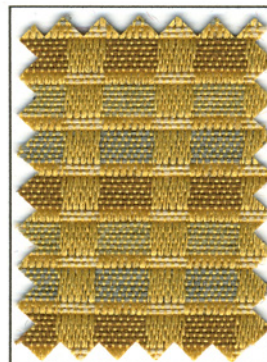
Mocha



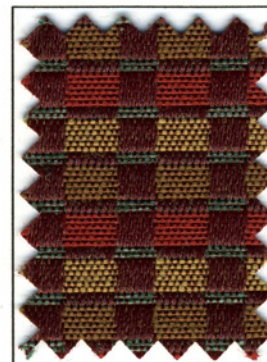
Pebble



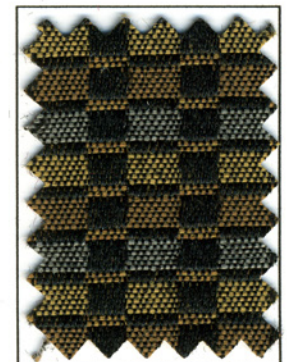
Blazer



Brushed Gold



Cordovan



Truffle

Specifications

CONTENT	52% Polyolefin, 48% Polyester	COLORFASTNESS	AATCC-8 Wet - Class 5 Dry - Class 5
REPEAT	0.75" Horizontal 0.50" Vertical	FLAMMABILITY	CAL Bulletin 117-E UFAC - Class I
WEIGHT	12.0 ± 0.5 oz. per linear yard	CLEANING CODE	WS - Water based cleaning agents
WIDTH	54 Inches	PATTERN DIRECTION	Up the roll
ABRASION	ASTM-D-4157 100,000+ DR	FINISH	Teflon [®]
LIGHTFASTNESS	AATCC-16E 40 Hours, Class 5	BACKING	Acrylic

FINISH OPTIONS	Mainframe can be ordered with a variety of "use specific" finishes such as anti-microbial, fire retardant, etc.
COLOR OPTIONS	Mainframe can be special ordered using any combination of available warp and fill yarn colors.
WARRANTY*	Mainframe comes with a 10-Year Limited Performance Warranty when used in recommended applications.
ORDERING	For order accuracy, specify the fabric name, color name, and special backing requirements, if needed. Example: Mainframe - Basil - Optional Finish.

Quality Product, Excellent Service...American Made

Suggested Applications

Institutional



Religious



Hospitality



Healthcare



Theatre



Business



DPC[®] Daniel Paul Chairs LLC

2052 SOUTH ECONOMY ROAD MORRISTOWN, TN 37813

TEL 423.586.9977

FAX 423.586.9927

SALES@DPCCHAIRS.COM

WWW.DPCCHAIRS.COM