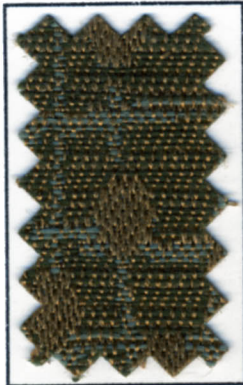


DPC™ Daniel Paul Chairs LLC

KUDOS



CAPER



MANGO



CYPRESS



AUTUMN



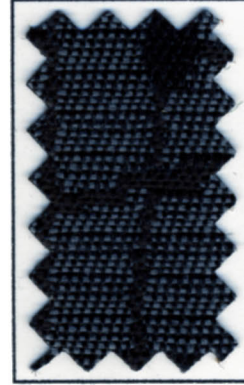
MAROON



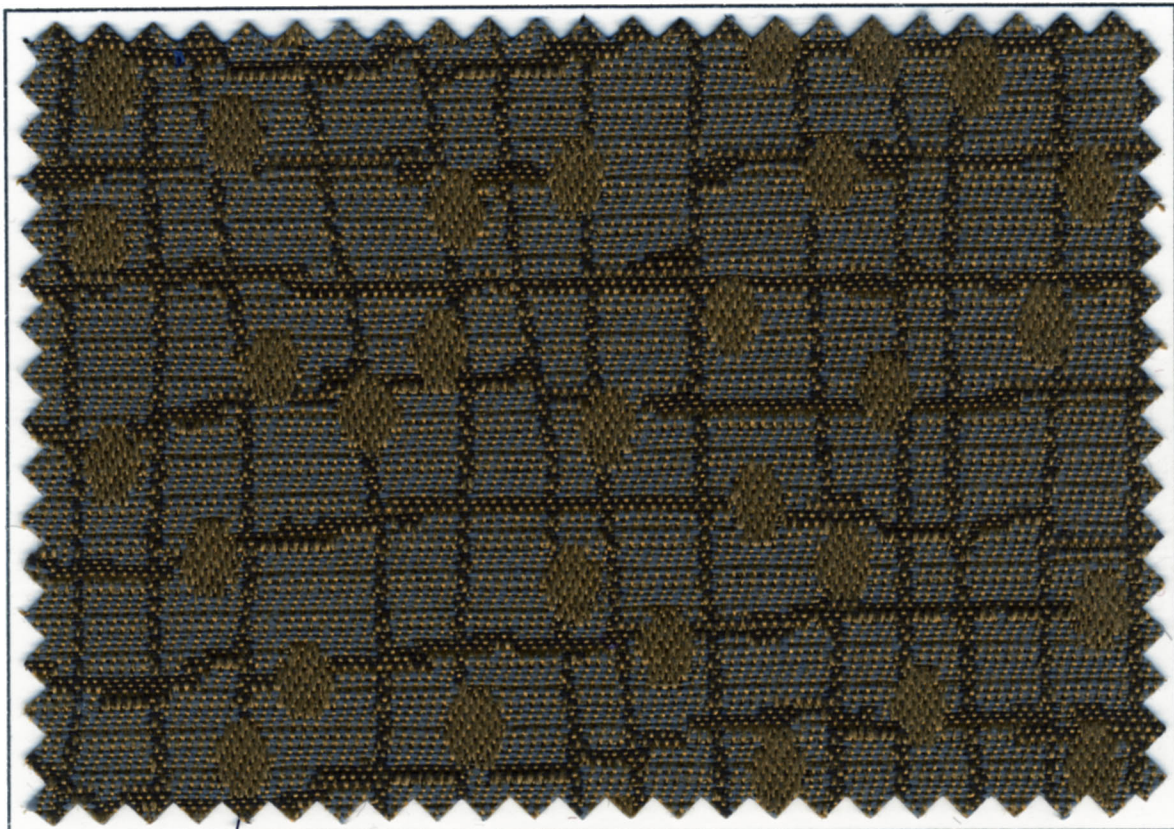
NAVY



FRONTIER



LAVA ROCK









TUMBLEWEED

KUDOS

upholstery fabric

Suggested Applications for this pattern are:

-  Corporate  Church  Healthcare
 Home Office  Hospitality  Institutional

Fiber Content:	100% Polyolefin
Width:	54" (137 / 140cm)
Weight:	11.0 ± 1 Oz./Linear Yard
Repeat:	6 ^{7/8} " H 9 ^{7/8} " V
Backing:	Acrylic
Abrasion: (Wyzenbeek ASTM-D-4157-02)	50,000 Double Rubs*
Tensile Strength: (ASTM-D-5034-90)	W: 50 lbs. F: 50 lbs.
Seam Slippage: (ASTM-D-4034-92)	W: 84 lbs F: 101 lbs.
Lightfastness: (AATCC-16A-1990)	40 Hours, Class 5
Colorfastness: (AATCC-8-1989)	Wet - Class 4.5 Dry - Class 4.5
Crocking: (AATCC-8-1989)	Wet - Class 4.5 Dry - Class 4.5
Flame Resistance:	California, Tech Bulletin 117, Section E: 191-53 Class 1 UFAC, Class 1 BIFMA - Class 1 NFPA 260-A, Class 1 B.S. 5852 Part 1: 1979 Ignition Source 0; smoldering cigarette Fabrics can be treated to meet these additional fire codes: FMVSS 302 Boston Fire Dept. BFD 1X-1 New York Port Authority
Cleaning Code:	W/S - For water based stains use water based cleaning agent, For oil based stains use solvent cleaner. *Testing was stopped at this point. Sample had not failed.

DPC™ Daniel Paul Chairs LLC

Manufacturing Facility and General Office

2052 S. Economy Road
Morristown, TN 37813
Phone: 423.586.9977 Fax.: 423.586.9927

Web Site: danielpaulchairs.com

E-mail: sales@danielpaulchairs.com