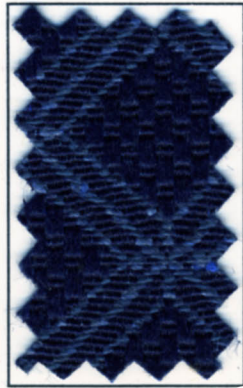


**DPC**<sup>®</sup> Daniel Paul Chairs LLC

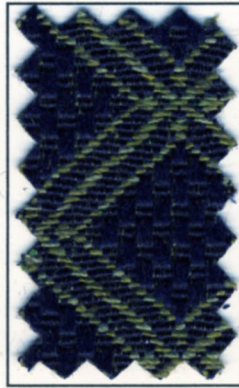
**HELEN**



BRASS



DENIM



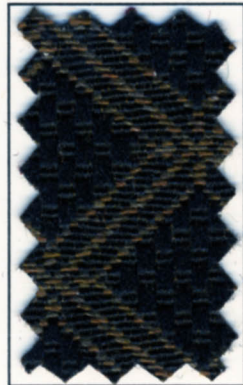
MOSS



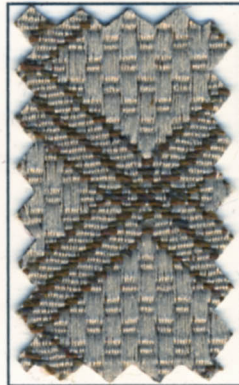
BASIL



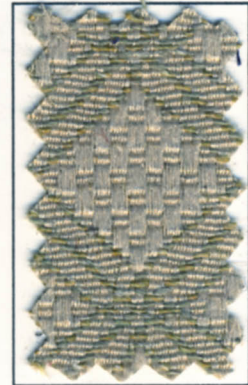
CRANBERRY



TRUFFLE



SADDLE



PESTO



RUST

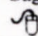


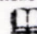
EARTH


# HELEN

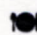
upholstery fabric

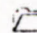
Suggested Applications for these patterns are:

 Corporate

 Church

 Healthcare

 Hospitality

 Institutional

Fiber Content:	56% Acrylic 44% Polyester
Width:	54" (137 / 140cm)
Weight:	10.2 ± 1 Oz./Linear Yard
Repeat:	1.5" H 3.8" V
Backing:	Acrylic & Teflon
Abrasion: (Wyzenbeek ASTM-D-4157-02)	30,000 Double Rubs*
Tensile Strength: (ASTM-D-5034-90)	W: 50 lbs. F: 50 lbs.
Tear Strength: (ASTM-D-2261-96)	W: 8 lbs. F: 8 lbs.
Seam Slippage: (ASTM-D-4034-92)	W: 25 lbs F: 25 lbs.
Lightfastness: (AATCC-16A-1990)	40 Hours, Class 5
Colorfastness: (AATCC-8-1989)	Wet - Class 5 Dry - Class 5
Crocking: (AATCC-8-1989)	Wet - Class 5 Dry - Class 5
Flame Resistance:	California, Tech Bulletin 117, Section E: 191-53 Class 1 UFAC, Class 1 BIFMA - Class 1 NFPA 260-A, Class 1 Fabrics can be treated to meet these additional fire codes: FMVSS 302 Boston Fire Dept. BFD 1X-1 New York Port Authority
Cleaning Code:	W/S - For water based stains use water based cleaning agent, For oil based stains use solvent cleaner. *Testing was stopped at this point. Sample had not failed.

## TEFLON SOIL STAIN REPELLENT

Teflon preserves the fresh good look of fabrics and furnishings throughout a wide variety of challenging conditions. Teflon keeps maintenance costs to a minimum and makes every installation a better investment.

### DPC™ Daniel Paul Chairs LLC

#### Manufacturing Facility and General Office

2052 S. Economy Road

Morristown, TN 37813

Phone: 423.586.9977 Fax.: 423.586.9927

Web Site: [danielpaulchairs.com](http://danielpaulchairs.com)

E-mail: [sales@danielpaulchairs.com](mailto:sales@danielpaulchairs.com)

