



Taupe



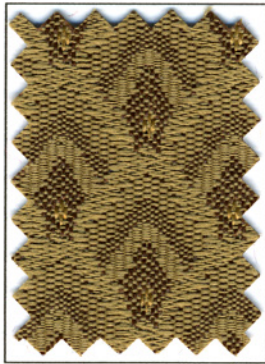
Regal



Evergreen



Plum



Sandhurst



Deep Red



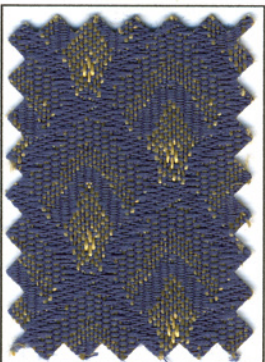
Alpine



Laurel



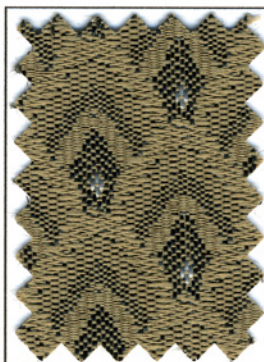
Classic Copen



Camelot



Cocoa



Concrete



Timeless

**Specifications**

<b>CONTENT</b>	100% Polyester	<b>COLORFASTNESS</b>	AATCC-8 Wet - Class 5 Dry - Class 5
<b>REPEAT</b>	0.88" Horizontal 0.88" Vertical	<b>FLAMMABILITY</b>	CAL Bulletin 117-E UFAC - Class I
<b>WEIGHT</b>	12.0 ± 0.5 oz. per linear yard	<b>CLEANING CODE</b>	WS - Water based cleaning agents
<b>WIDTH</b>	54 Inches	<b>PATTERN DIRECTION</b>	Railroaded
<b>ABRASION</b>	ASTM-D-4157 100,000+ DR	<b>FINISH</b>	Teflon <sup>®</sup>
<b>LIGHTFASTNESS</b>	AATCC-16E 40 Hours, Class 5	<b>BACKING</b>	Acrylic

<b>FINISH OPTIONS</b>	Georgetown can be ordered with a variety of "use specific" finishes such as anti-microbial, fire retardant, etc.
<b>COLOR OPTIONS</b>	Georgetown can be special ordered using any combination of available warp and fill yarn colors.
<b>WARRANTY*</b>	Georgetown comes with a 10-Year Limited Performance Warranty when used in recommended applications.
<b>ORDERING</b>	For order accuracy, specify the fabric name, color name, and special backing requirements, if needed. <b>Example: Georgetown - Taupe - Optional Finish.</b>

**Quality Product, Excellent Service...American Made**

Suggested Applications

Institutional



Religious



Hospitality



Healthcare



Theatre



Business



**DPC**<sup>®</sup> Daniel Paul Chairs LLC

2052 SOUTH ECONOMY ROAD MORRISTOWN, TN 37813

TEL 423.586.9977

FAX 423.586.9927

SALES@DPCCHAIRS.COM

WWW.DPCCHAIRS.COM