

DPC™ Daniel Paul Chairs LLC
UPHOLSTERY FABRIC SELECTION GUIDE
Grade 8 Orlando

Specifications
 Fiber: 57% Olefin 47% Polyester
 Weight: 8.6 oz per linear yard (±1 oz)
 Width: 54"
 Backing: Latex/Blockade Treatment
 Cleaning Code: WS - For water based stains use water based cleaning agent. For oil based stains use solvent cleaner.

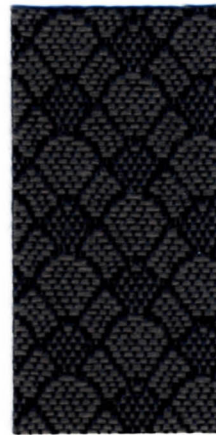
Performance

Test Description	Test	Warp	Fill
Break Strength		100 lbs.	160 lbs.
Tear Strength		14 lbs.	18 lbs.
Seam Slippage		45 lbs.	30 lbs.
Elongation		%	%
Dimensional Stability		5.0 %	2.0 %
Colorfastness to Crocking		Wet: Class 5	Dry: Class 5
Colorfastness to Light	AATCC 16E	Class: 5 60 Hours	
Abrasion		50,000 Double Rubs	
Abrasion-Martindale	ASTM-D-4966	Cycle	

Flame Resistance
 California Technical Bulletin 117, Section E
 BIFMA Class 1
 NFPA 260 Class 1
 UFAC, Class 1



Harvest

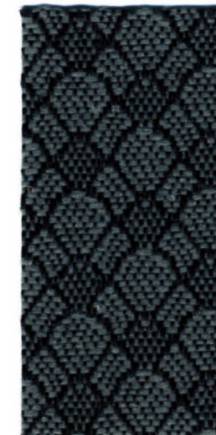


Mocha

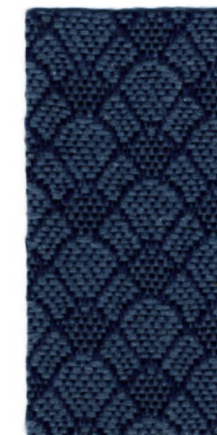
DPC™ Daniel Paul Chairs LLC



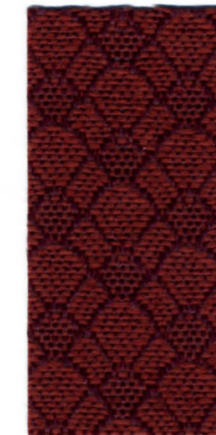
Pine Forest



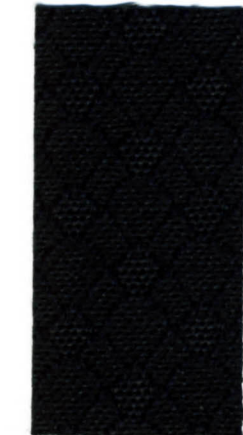
Charcoal



Sapphire



Cherry



Midnight

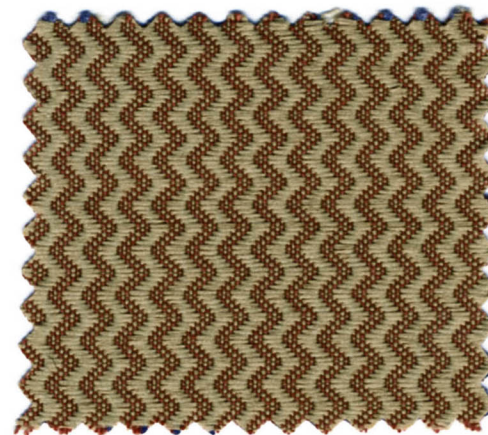
Grade 13 Stryker

Specifications
 Fiber: 62% Polyester 38% Cotton
 Weight: 11.6 oz per linear yard (±1 oz)
 Width: 54"
 Backing: Acrylic Backing, Teflon Coating
 Repeat Size: 1/4" Horizontal 3/16" Vertical
 Cleaning Code: WS - For water based stains use water based cleaning agent. For oil based stains use solvent cleaner.

Performance

Test Description	Test	Warp	Fill
Break Strength	ASTM-D-5034	320.3 lbs.	478.3 lbs.
Tear Strength	ASTM-D-2262	23.5 lbs.	19.5 lbs.
Seam Slippage	ASTM-D-4034	44.0 lbs.	66.0 lbs.
Elongation	JIFS	%	%
Dimensional Stability	ASTM-D-3597	%	%
Colorfastness to Crocking	AATCC 8	Wet: Class 5	Dry: Class 5
Colorfastness to Light	AATCC 16E	Class: 5 40 Hours	
Abrasion-Wyzenbeek (wire screen)	ASTM-D-4157	50,000 Double Rubs	
Abrasion-Martindale	BS 5690	Cycles	

Flame Resistance
 California Technical Bulletin 117, Section E
 CS-191-53, Class 1
 BIFMA X5.7-1991
 NFPA 260-1989, Class 1
 UFAC, Class 1
 B.S. 5852 Part 1: 1979 Ignition Source 0; smoldering cigarette



Sunrise



Nougat



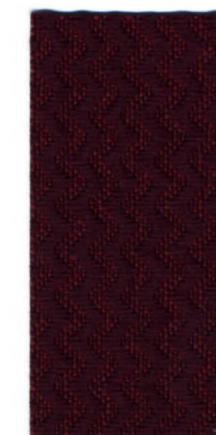
Verde



Willow



Country Blue



Pompeii Red



Raven

Grade 13 Stargaze

Specifications
 Fiber: 100% Polyester
 Weight: 10.0 oz per linear yard (±1 oz)
 Width: 54"
 Backing: Acrylic Backing, Teflon Coating
 Repeat Size: 1-3/4" Horizontal 1-5/8" Vertical
 Cleaning Code: WS - For water based stains use water based cleaning agent. For oil based stains use solvent cleaner.

Performance

Test Description	Test	Warp	Fill
Break Strength	ASTM-D-5034	365.4 lbs.	478.3 lbs.
Tear Strength	ASTM-D-2262	22.9 lbs.	21.9 lbs.
Seam Slippage	ASTM-D-4034	46.0 lbs.	106.0 lbs.
Elongation	JIFS	%	%
Dimensional Stability	ASTM-D-3597	%	%
Colorfastness to Crocking	AATCC 8	Wet: Class 5	Dry: Class 5
Colorfastness to Light	AATCC 16E	Class: 5 40 Hours	
Abrasion-Wyzenbeek (wire screen)	ASTM-D-4157	50,000 Double Rubs	
Abrasion-Martindale	BS 5690	Cycles	

Flame Resistance
 California Technical Bulletin 117, Section E
 CS-191-53, Class 1
 BIFMA X5.7-1991
 NFPA 260-1989, Class 1
 UFAC, Class 1
 B.S. 5852 Part 1: 1979 Ignition Source 0; smoldering cigarette



Chive



Blueberry



Khaki



Wine

DPC™ Daniel Paul Chairs LLC

Manufacturing Facility and General Office
 2052 S. Economy Road
 Morristown, TN 37813
 Phone: 423.586.9977 Fax.: 423.586.9927

Web Site: danielpaulchairs.com
E-mail: sales@danielpaulchairs.com