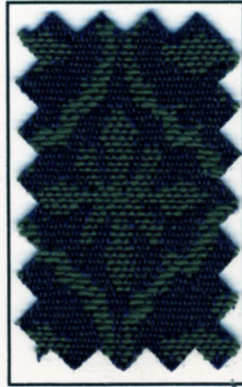


DPC® Daniel Paul Chairs LLC

COLE



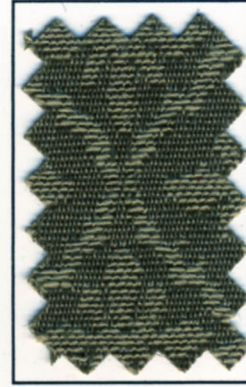
NAVY



INDIGO



HUNTER



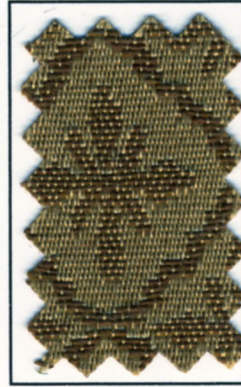
OLIVE



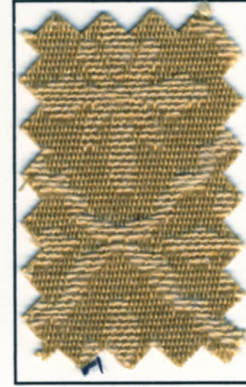
MAUVE



BURGUNDY



MOCHA



GOLD



BERRY




ORCHARD

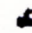
COLE


upholstery fabric

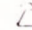
Suggested Applications for these patterns are:

 Corporate

 Church

 Healthcare

 Hospitality

 Institutional

Fiber Content:	56% Acrylic, 44% Polyester	
Width:	54" (137 / 140cm)	
Weight:	9.6 ± 1 Oz./Linear Yard	
Repeat:	1.5"H 1.5"V	
Backing:	Acrylic & Teflon	
Abrasion: (Wyzenbeek ASTM-D-4157-92)	30,000 Double Rubs*	
Tensile Strength: (ASTM-D-5034-90)	W: 50 lbs. F: 50 lbs.	
Tear Strength: (ASTM-D-2262-81)	W: 8 lbs. F: 9 lbs.	
Seam Slippage: (ASTM-D-4034-92)	W: 25 lbs F: 25 lbs.	
Lightfastness: (AATCC-16A-1990)	40 Hours, Class 5	
Colorfastness: (AATCC-8-1989)	Wet - Class 5 Dry - Class 5	
Crocking: (AATCC-8-1989)	Wet - Class 5 Dry - Class 5	
Flame Resistance:	California, Tech Bulletin 117, Section E: 191-53 Class 1 UFAC, Class 1 BIFMA - Class 1 NFPA 260-A, Class 1	Fabrics can be treated to meet these additional fire codes: FMVSS 302 Boston Fire Dept. BFD 1X-1 New York Port Authority
Cleaning Code:	W/S - For water based stains use water based cleaning agent, For oil based stains use solvent cleaner. *Testing was stopped at this point. Sample had not failed.	

TEFLON SOIL STAIN REPELLENT

Teflon preserves the fresh good look of fabrics and furnishings throughout a wide variety of challenging conditions. Teflon keeps maintenance costs to a minimum and makes every installation a better investment.

DPC™ Daniel Paul Chairs LLC

Manufacturing Facility and General Office

2052 S. Economy Road

Morristown, TN 37813

Phone: 423.586.9977 Fax.: 423.586.9927

Web Site: danielpaulchairs.com

E-mail: sales@danielpaulchairs.com

