

# Hewitt

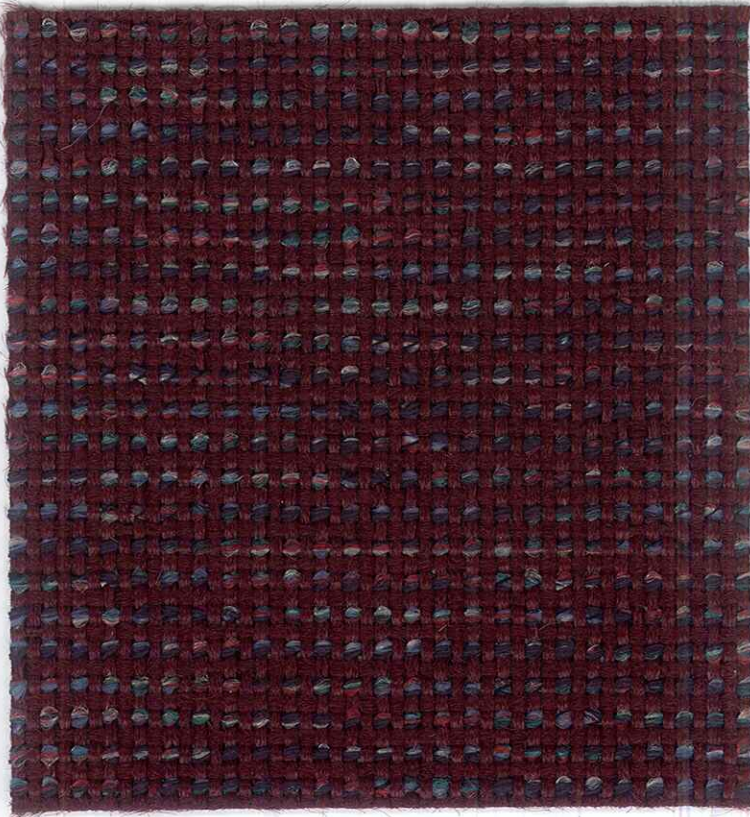
**IN** This symbol indicates that the color is part of Absecon Mills In-Stock Warp Speed® Program.

UPHOLSTERY FABRIC 10\*

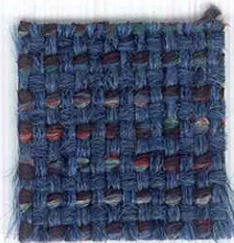
86% Polyolefin

10% Acrylic

4% Polyester



MING RED **IN**



NORDIC



WILLOW



SOFT GOLD **IN**



SEPIA **IN**



KHAKI **IN**



FIR GREEN



SAP GREEN



SUNSET



HAZEL **IN**



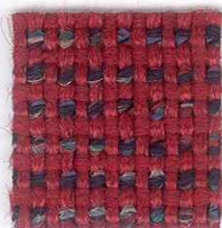
SAGE



GARDEN



CONCORD



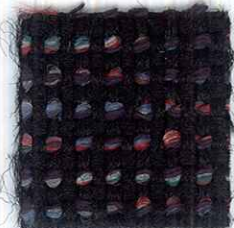
SCARLET



HENNA



EARTHEN



CARBON BLACK **IN**



MIDNIGHT

\* Covered by a 10 year limited performance warranty.



## TECHNICAL INFORMATION

Fiber: 86% Polyolefin | 10% Acrylic | 4% Polyester

Backing | Finish: Acrylic

**A Abrasion Resistance:** 80,000 double rubs (wire screen)

**Weight:** 17.0 ounces per linear yard (± 1 oz.) (525 g/m)

**Width:** 54" (137-140 cm)

**Repeat:** None (Pattern is woven up the roll and suitable for railroading)

**☼ Lightfastness:** 60 Hours, Class 5

**☘ Colorfastness:** Wet - Class 5 | Dry - Class 5

**★ Seam Slippage:** Warp - 50 lbs | Fill - 56 lbs.

**Cleaning Instructions:** WS - For water based stains, use mild detergent foam or upholstery shampoo. For oil based stains, spot clean with a dry cleaning solvent being sure to test area first. Cleaning by a professional service is recommended.

**🔥 Flame Resistance:** California Technical Bulletin 117, Section E; CS-191-53, Class 1; BIFMA X5.7-1991; UFAC, Class 1; B. S. 5852 Part 1: 1979 Ignition Source 0, smoldering cigarette.

Fabrics by **Absecon Mills, Inc.** Fabric performance symbols indicate that a fabric performs to commercial furniture manufacturing standards and passes all applicable testing as specified by the Association for Contract Textiles (ACT).

02/2010 | For additional cards or memo samples:

email [samples@absecon.com](mailto:samples@absecon.com)



ACADEMIC



CORPORATE



HOSPITALITY



THEATER



WORSHIP



Absecon Mills is focused on being a responsible corporate entity and we are continually striving to find ways to help preserve our environment, increase energy efficiency and reduce waste. Our mode of manufacturing is specifically designed to prevent damage to the environment. Our products are woven using wind power and many are constructed with polypropylene (a by-product of gasoline manufacturing, utilizing post-industrial waste) and recycled polyester, which helps keep post-consumer waste in the material stream and out of landfills. Absecon offers finishes that use ten times less fluorocarbons than conventional finishes and are SCS Indoor Advantage Gold certified. We participate in a fabric recycling program and work hard to lessen our footprint on the environment. For more information on our green initiatives, please visit [www.absecon.com](http://www.absecon.com)



WOVEN WITH WIND POWER

