



*Freestyle*







Spartan Cotton



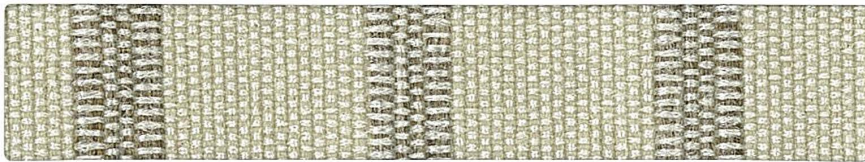
Parasail Coconut



Zip Line Linen



Rappel Mist



Glide Garlic



Parasail Coin



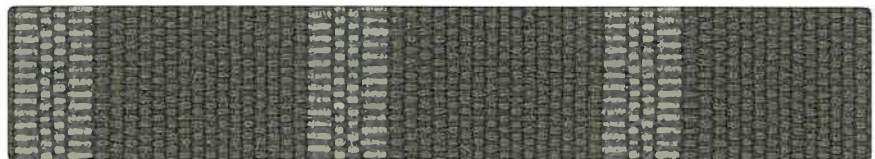
Spartan Feather



Zip Line Wool



Spartan Pebble



Glide Shadow



Spartan Chocolate



Zip Line Spice



Parasail Autumn



Rappel Harvest



Glide Maple



Parasail Obsidian



Zip Line Newsprint



Rappel Wilderness



Spartan Onyx



Glide Limousine





Glide Honey



Spartan Daffodil



Rappel Marigold



Parasail Candy Corn

Zip Line Zinnia



Parasail Clover



Glide Aloe



Rappel Spinach



Zip Line Lime



Spartan Granny Smith



Glide Skydive



Zip Line Cascade



Parasail Beachside



Spartan Surf



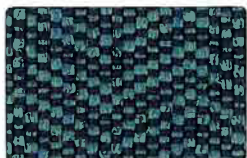
Zip Line Everglade



Spartan Deep Sea



Glide Surf



Zip Line Mermaid

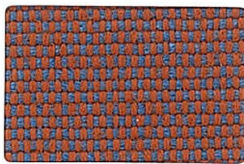


Parasail Niagara



Spartan Indigo





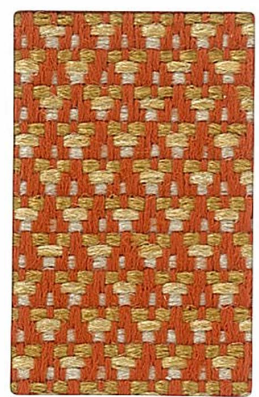
Spartan Blue Crab



Zip Line Carnival



Spartan Tangerine



Parasail Strawflower



Glide Carrot



Zip Line Salsa



Parasail Fireball



Spartan Tomato



Rappel Poppy



Glide Sriracha



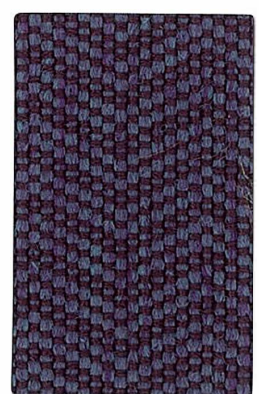
Spartan Dahlia



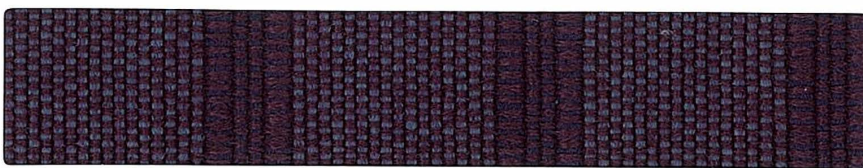
Zip Line Beach Rose



Spartan Aubergine



Zip Line Verbena



Glide Tawney Port



Rappel Grape



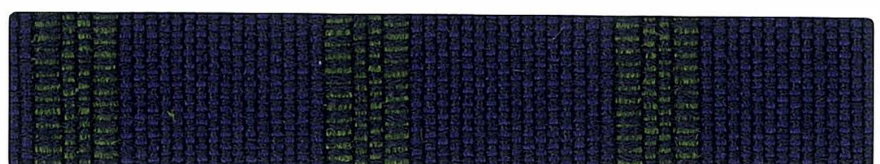
Zip Line Crocus



Zip Line Hyacinth



Spartan Deep Violet



Glide Purple

# Freestyle

## SPECIFICATIONS

Pattern	Content	Weight (per yard)	Repeat	Abrasion ASTM D-4197 (Double Rubs)	Colorfastness AATCC8 Test Method B	Lightfastness AATCC 16	Seam Slippage ASTM-D-4034	Tensile Strength ASTM-D-5034	Tear Strength ASTM-2262
Glide <i>Railroaded</i>	100% Olefin	13 oz.	H - 1 1/2" V - 0"	50,000	Wet-Class 5 Dry-Class 5	Class 5 60 Hours	Warp-85 lbs. Fill-106 lbs.	Warp-189 lbs. Fill-251 lbs.	Warp-17 lbs. Fill-42 lbs.
Parasail	100% Olefin	13 oz.	H - 1/4" V - 3/8"	50,000	Wet-Class 5 Dry-Class 5	Class 5 60 Hours	Warp-76 lbs. Fill-109 lbs.	Warp-187 lbs. Fill-203 lbs.	Warp-21 lbs. Fill-33 lbs.
Rappel	100% Olefin	13 oz.	H - 1/2" V - 7/16"	60,000	Wet-Class 5 Dry-Class 5	Class 5 60 Hours	Warp-123 lbs. Fill-98 lbs.	Warp-100 lbs. Fill-100 lbs.	Warp-24 lbs. Fill-26 lbs.
Spartan	100% Olefin	13 oz.	NONE	60,000	Wet-Class 5 Dry-Class 5	Class 5 60 Hours	Warp-156 lbs. Fill-130 lbs.	Warp-191 lbs. Fill-223 lbs.	Warp-17 lbs. Fill-44 lbs.
Zipline <i>Railroaded</i>	100% Olefin	14 oz.	H - 7/8" V - 1/4"	50,000	Wet-Class 5 Dry-Class 5	Class 5 60 Hours	Warp-143 lbs. Fill-118 lbs.	Warp-118 lbs. Fill-120 lbs.	Warp-21 lbs. Fill-23 lbs.

All fabrics are 54" Wide

**FLAME RESISTANCE**  
California Technical Bulletin 117-2013  
UFAC, Class 1  
NFPA 260

MADE IN  
  
U. S. A.



412 Boston Avenue Egg Harbor City NJ 08215 / [www.dougind.com](http://www.dougind.com) / Samples Fax 609 965 3221 / Samples e-mail [samples@dougind.com](mailto:samples@dougind.com)  
Customer Service Phone 800 950 3684 / Customer Service Fax 609 965 7271 / Customer Service e-mail [service@dougind.com](mailto:service@dougind.com)



# ***Freestyle* | Green and Clean**

## ***Olefin is the “greenest” contract fiber around!***

- Green from the start! Olefin is a by-product from the manufacturing of gasoline.
- No halogens, no chlorine, no Teflon® or fluorocarbons so stain resistant chemicals are not needed.
- No harmful effects on the environment.
- Can be recycled multiple times.
- Olefin's production has the lowest energy consumption per unit of all other man-made fibers.

## ***Olefin is the easiest fiber to clean!***

Vacuum to prevent dust and light soil buildup

The general cleaning code is WS

“W” = use a miscible water-soluble cleaning product for water-based stains

“S” = use a solvent based cleaner for oil stains (ventilate well)

Freestyle's 100% olefin content allows you to take cleaning steps you would never attempt with other fibers, as the color goes completely through the fiber (like a carrot, not a radish), or a bucket that does not lose its color after using bleach. Our Freestyle fabrics do the same thing!

Need to use bleach to remove a stubborn stain or disinfect? No problem. It will not harm the fabric. Start off with 20% bleach to 80% water. If the stain persists, try a 50/50 ratio. If the stain still remains, use 100% bleach with caution (for yourself and the surrounding area).

A word of warning, be sure to thoroughly rinse out all the cleaning agents from the fabric.