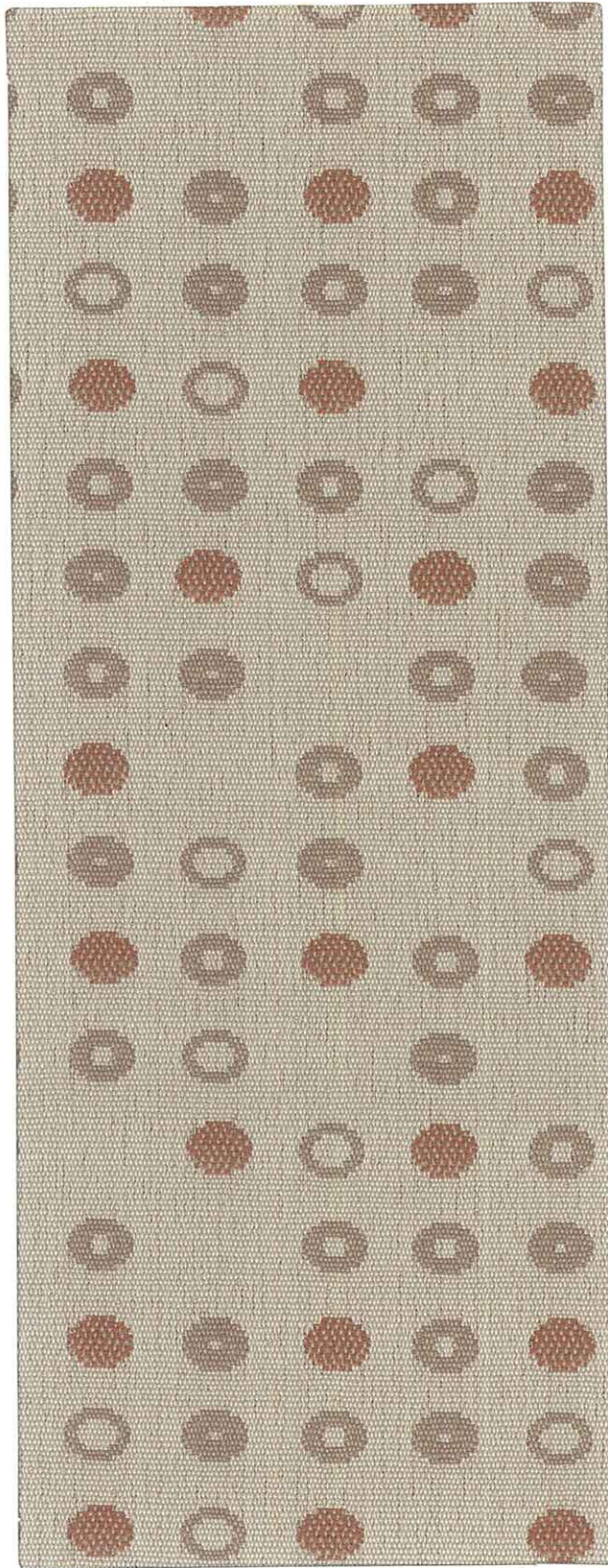


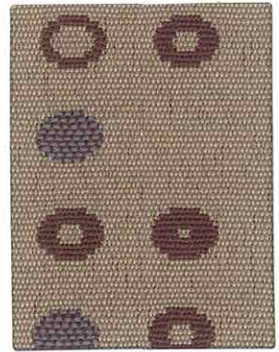
Fine Tune



Luna



Tangelo



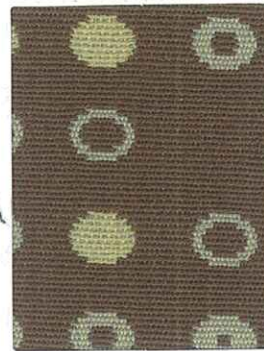
Wheat



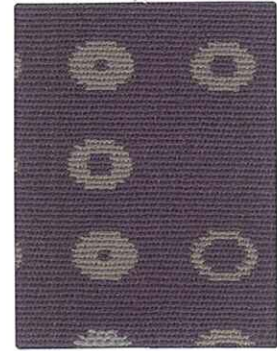
Ruby



Cocoa



Herb



Ash



Indigo



Onyx

SPECIFICATIONS

Pattern: Fine Tune
Content: 100% Polyester
Width: 54"

PERFORMANCE

Abrasion: Heavy Duty - 40,000 Cycles
(Wyzenbeek - Cotton Duck Abradant) (ASTM D4157)
Light Fastness: Class 4/40 hrs. min. (AATCC16A)
Color Fastness: Class 3 (ASTM D3597, AATCC8) Wet
Class 4 (ASTM D3597, AATCC8) Dry
Physical Properties: 80 lbs. warp, 65 lbs. weft (ASTM D4034) Breaking Strength
43 lbs. warp, 59 lbs. weft (ASTM D4034) Seam Slippage
Pilling Resistance: Class 4

FLAMMABILITY

Passes: California Tech. Bulletin #117 Section E (CS-191-53)

CARE

Cleanability: W - Water based cleaners may be used.

This fabric is made in China.

For samples or further information, please contact:

Culp, Inc.
Contract Fabrics
1823 Eastchester Drive
High Point, NC 27265
Phone: (336)-889-5161 • Fax: (336)-881-8631
www.culp.com

CULP
CONTRACT